

Multi-frequency multi-port antenna

Model	SL17288A	SL17291A			
Item Name	Specification	Specification			
Frequency Range (MHZ)	1710~2700	1710-2170	1710-2170	1710-2170	1710-2170
Gain (dBi)	17.5±0.5	17.5±0.5	17.5±0.5	17.5±0.5	17.5±0.5
Horizontal Beam Width (°)	65±8	65±6		65±6	
Vertical Beam Width (°)	7±1.5	7±1.5		7±1.5	
Electrical Downtilt (°)	0~10	0~10		0~10	
VSWR	≤1.5 : 1	≤1.5 : 1			
Isolation between Ports (dB)	≥30	≥30			
Cross Polarization Ratio (dB)	0° ≥15; ±60° ≥10	0° ≥15; ±60° ≥10			
Upper Sidelobe Suppression (dB)	≥15	≥16			
Null-Fill (dB)	≤25	≤25			
Front to Back Ratio (dB)	≥25	≥25			
Polarization	±45°	±45°			
Input Maximum CW Power (W)	200	250	250		
PIMD 3th	≤-107dBm (@20W)	≤-107dBm (@20W)			
Impedance (Ω)	50	50			
Input Connector	2×7/16DIN-F	8×7/16DIN-F			
Dimensions of Antenna (mm)	1350×175×86	1370×535×132			
Diameter of Installation Pole (mm)	Φ80~Φ114	Φ80~Φ114			



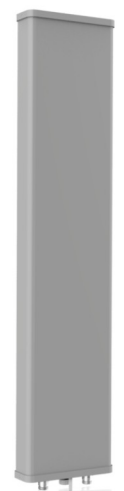
Model	SL17294A		SL17296A			
Item Name	Specification					
Frequency Range (MHZ)	698~960	1710~2690	790~960	790~960	1710~2690	1710~2690
Gain (dBi)	14.5±0.5	17.5±0.5	14.5±0.5	14.5±0.5	17.5±0.5	17.5±0.5
Horizontal Beam Width (°)	65±8	65±8	65±6		65±8	
Vertical Beam Width (°)	13.5±1.5	7±1.5	13.5±1.5		7±1.5	
Electrical Downtilt (°)	0~14	0~10	0~14		0~10	
VSWR	≤1.5 : 1		≤1.5 : 1			
Isolation between Ports (dB)	≥30		≥30			
Cross Polarization Ratio (dB)	0° ≥15; ±60° ≥10		0° ≥15; ±60° ≥10			
Upper Sidelobe Suppression (dB)	≥15		≥15			
Null-Fill (dB)	≤25		≤25			
Front to Back Ratio (dB)	≥25		≥25			
Polarization	±45°		±45°			
Input Maximum CW Power (W)	500	200	500	200		
PIMD 3th	≤-107dBm (@20W)		≤-107dBm (@20W)			
Impedance (Ω)	50		50			
Input Connector	4×7/16DIN-F		8×7/16DIN-F			
Dimensions of Antenna (mm)	1450×287×132		1450×535×132			
Diameter of Installation Pole (mm)	Φ80~Φ114		Φ80~Φ114			

High-speed narrow beam antenna

Model	SL12618A/B/C	SL12600A/B
Item Name	Specification	Specification
Frequency Range (MHZ)	1710-2170	880-960
Gain (dBi)	19.5±0.5	20±0.5
Horizontal Beam Width (3dB) (°)	32±4	32±4
Vertical Beam Width (3dB) (°)	7±1	7±1
Electrical Downtilt (°)	0/3/6	0/3
VSWR	≤1.5 : 1	≤1.5 : 1
Isolation between Ports (dB)	≥28	≥30
Cross Polarization Ratio (dB)	0° ≥15; ±30° ≥10	0° ≥15; ±30° ≥10
Upper Sidelobe Suppression (dB)	≤-15	≤-16
Null-Fill (dB)	N/A	N/A
Front to Back Ratio (dB)	≥28	≥30
Polarization	±45°	±45°
Input Maximum CW Power (W)	250	500
PIMD 3th	≤-107dBm (@20W)	≤-107dBm (@20W)
Impedance (Ω)	50	50
Input Connector	7/16DIN-F	7/16DIN-F
Dimensions of Antenna (mm)	1370×290×85	2500×535×168
Diameter of Installation Pole (mm)	Φ80~Φ114	Φ80~Φ114



Model	SL17245A	SL17103A
Item Name	Specification	Specification
Frequency Range (MHZ)	1710-2170	820-880or880~960
Gain (dBi)	19.5±0.5	19.5±0.5
Horizontal Beam Width (3dB) (°)	32±4	32±4
Vertical Beam Width (3dB) (°)	7±1	7±1
Electrical Downtilt (°)	0-8	0-8
VSWR	≤1.5 : 1	≤1.5 : 1
Isolation between Ports (dB)	≥28	≥30
Cross Polarization Ratio (dB)	0° ≥15; ±15° ≥10	0° ≥15; ±15° ≥10
Upper Sidelobe Suppression (dB)	≤-16	≤-15
Null-Fill (dB)	N/A	N/A
Front to Back Ratio (dB)	≥28	≥30
Polarization	±45°	±45°
Input Maximum CW Power (W)	250	250
PIMD 3th	≤-107dBm (@20W)	≤-107dBm (@20W)
Impedance (Ω)	50	50
Input Connector	7/16DIN-F	7/16DIN-F
Dimensions of Antenna (mm)	1370×290×86	2500×535×160
Diameter of Installation Pole (mm)	Φ80~Φ114	Φ80~Φ114



The elevator high-gain antenna

- Support for single/double polarization method.
- In view of the top cover, a single source, could achieve the whole covered in the elevator,
- Antenna with vehicle design, wide frequency band, high gain, Low PIM, Low VSWR and large power, strong channel.
- Simple installation, convenient construction, low maintenance cost.



Wild Angle shoot light antenna

- Support multiple antenna system, covering 880 ~ 2635 MHz, vertical beam 55° ~ 75° Angle signal coverage.
- Products can be customized single or high frequency double polarization, support LTE MIMO.
- Simple installation, convenient construction, low maintenance cost.



Item Name	The elevator high-gain antenna	Wild Angle shoot light antenna
Model	SL12933D	SL16262K
Frequency Range (MHz)	880-960/1710-2635	880-960/1710-2025/2300-2635
Gain (dBi)	14±1/17±1	10/11/13
Horizontal Beam Width (3dB) (°)	30±5/20±5	20~35
Vertical Beam Width (3dB) (°)	30±5/20±5	55~75
Electrical Downtilt (°)	0	/
VSWR	≤1.5 : 1	≤1.5 : 1
Front to Back Ratio (dB)	≥20	25
Isolation between Ports (dB)	≥30	/
Polarization	Vertical Polarization	Vertical/±45/±45
Input Maximum CW Power (W)	250	50
PIMD 3th	≤-107dBm (@5W)	≤-107dBm (@5W)
Impedance (Ω)	50	50
Input Connector	N	N
Dimensions of Antenna (mm)	460×425×132	430×430×150
Installation method	Pole Mounting	Floor Mounting
Diameter of Installation Pole (mm)	Φ60~Φ105	/

Sports venues antenna

Model	SL12117			SL12118		
Item Name	Specification			Specification		
Frequency (MHz)	698-960	1710-2200	2200-2700	698-960	1710-2200	2200-2700
Gain (dBi)	11			8.7	9	9
Horizontal Beamwidth (°)	33	33	30	60	54	63
Vertical Beamwidth (°)	63	57	58	59	55	60
FronttoBack Ratio at 180° (dB)	24			24		
Cross Polarization Ratio(dB)	20			24	20	20
Isolation (dB)	24			30		
VSWR Return Loss (dB)	1.8 10.9	1.7 11.7	1.7 11.7	1.9 10.1	1.8 10.9	1.8 10.9
PIMD 3th	≤-153dBc(@20W)			≤-153dBc(@20W)		
Input Power (W)	150			150		
Polarization	±45°			±45°		
Impedance (Ω)	50			50		
RF Connector	7/16DIN-F			7/16DIN-F		
Dimensions of Antenna (mm)	610×340×127			300×300×125		



Model	SL12992B			SL12999A		
Item Name	Specification			Specification		
Frequency Range (MHZ)	698-960	1710-2200	2200-2690	698-960	1710-2200	2200-2690
Gain (dBi)	12±0.5	12±0.5	12±0.5	11±0.5		
Horizontal Beam Width (°)	23±8	22±8	18±8	30±10		
Vertical Beam Width (°)	60±10	63±10	60±12	30±10		
Electrical Downtilt (°)	0			0		
VSWR	≤1.5 : 1			≤1.5 : 1		
Isolation between Ports (dB)	≥24			≥24		
Cross Polarization Ratio (dB)	0° ≥20	0° ≥18	0° ≥18	0° ≥18		
Upper Sidelobe Suppression (dB)	18			18		
Front to Back Ratio (dB)	≥20			≥25		
Polarization	±45°			±45°		
Input Maximum CW Power (W)	150			100		
PIMD 3th	≤-153dBc (@20W)			≤-153dBc (@20W)		
Impedance (Ω)	50			50		
Input Connector	7/16DIN-F			7/16DIN-F		
Dimensions of Antenna (mm)	1080×490×117			1060×740×132		



CPE micro base station antenna (Small cell)

- Multiband integration, high degree of isolation between ports, high gain, high front-to-back ratio high performance.
- Using high precision line coupling and calibration input signal.
- Small beautiful, slim, suitable for a complete set of micro base station.



Item Name	Electrical Parameters					
	SL12920A		SL12923A		SL12924A	
Frequency Range (MHz)	1710~1885	2400~2500	3300~3800	2400~2500	2300~2700	2400~2500
Gain (dBi)	12±1	>2	16±1	>2	13±1	>2
Horizontal Beam Width	45 (±6°)	360	20±6°	360	36±6°	360
Vertical Beam Width	45 (±6°)	/	25±6°	/	36±6°	/
VSWR	≤2	≤3	≤2	≤3	≤2	≤3
Polarization	Horizontal /Vertical	Vertical	±45°	Vertical	Horizontal /Vertical	Vertical
Isolation Between Ports (dB)	>15	>18	>12	>18	>15	>18
Impedance (Ω)	50					
Input Connector	SMA-Mx2	MCX-Mx2	SMA-Mx2	MCX-Mx2	SMA-Mx2	MCX-Mx2
Other Parameters	Other Parameters					
Dimensions of Antenna (mm)	250mm × 250mm × 30mm					
Weight of Antenna (kg)	0.92		0.92		0.9	
Temperature (°C)	-40~+60					
Max Wind Speed (m) /s	55					
Radome Material	UPC					