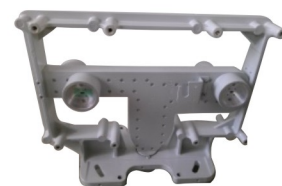


Product main performance parameters

(M)	0.3						0.6						
GHz	28G (27.5 ~ 29.5)GHz		32G (31.8 ~ 33.4)GHz		38G (37.0 ~ 40.0)GHz		28G (27.5 ~ 29.5)GHz		32G (31.8 ~ 33.4)GHz		38G (37.0 ~ 40.0)GHz		
Polarization(D/S)	D	S	D	S	D	S	D	S	D	S	D	S	
XPD(dB)	30	30	30	30	30	30	30	30	30	30	30	30	
Gain(dBi)	(Low)	37.6	36.8	38.7	37.7	39.6	38.6	42.3	41.5	43.2	42.2	44.6	43.6
	(Mid)	38.1	37.3	38.9	37.9	40.1	39.1	42.6	41.8	43.5	42.5	45.2	44.2
	(Top)	38.6	37.8	39.1	38.1	40.5	39.5	43	42.2	43.8	42.8	45.8	44.8
F/B Ratio(dB)	63	63	58	58	61	61	68	68	61	61	64	64	
3dB BW(°)	2.2	2.2	1.8	1.8	1.6	1.6	1.2	1.2	1	1	0.9	0.9	

E-Band/V-Band Antenna

(M)	0.3		0.6		
GHz	80G (71 ~ 86)GHz	42G (40.5 ~ 43.5)GHz	80G (71 ~ 86)GHz	42G (40.5 ~ 43.5)GHz	
Polarization	D				
XPD(dB)	30	30	30	30	
Gain(dBi)	(Low)	45.7	39.6	49.6	43.1
	(Mid)	46	40.1	50.1	43.8
	(Top)	46.3	40.5	50.6	44.4
F/B Ratio(dB)	65	61	67	62	
3dB BW(°)	0.8	1.6	0.5	0.9	



4 Ports OMT



Straight button OMT

Microwave antenna component

- Microwave antenna support full range frequency OMT .
- Four ports OMT support 3 dB / 6 dB coupling
- Support product Single revised to double polarization, support for polarization separated



Separate OMT

Frequency	7G&8G	10W	11G	13G	15G	18G	23G	26G	28G	32G	38G	42G
Coupling degree 3DB/6DB	✓	✓	✓	✓	✓	✓	✓	✓	✓	✓	✓	✓