



Lens Antenna Catalogue

1

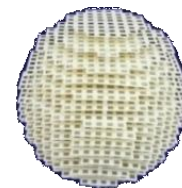
新材料/超材料透镜天线
New Material Lens Antenna

目录
contents

SL11009A

超表面1710-2690MHz龙伯透镜 (球透镜)

Meta-surface 1710-2690MHz Luneberg lens (sphere)



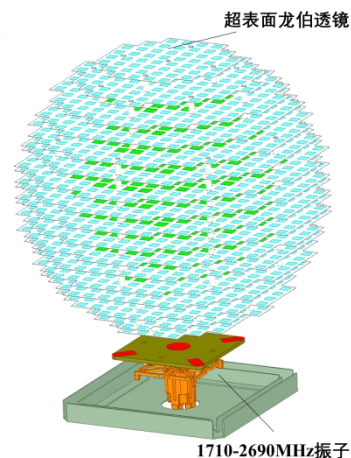
电性能指标 Electrical Properties

频率范围Frequency range (MHz)	1710-1830	1885-2025	2515-2675
极化方式Polarization (°)	支持水平极化、垂直极化、±45线极化辐射单元		
增益Gain (dBi)	≥13.5	≥14.2	≥16.0
水平面半功率波束宽度Horizontal half power beam width (°)	34±1	31±2	23±2
垂直面半功率波束宽度Vertical Half Power Beam Width (°)	34±1	31±2	23±2
前后比Front to back ratio (dB)	≥22	≥25	≥25
交叉极化比Cross polarization ratio (dB, 轴向)	≥20		
上旁瓣抑制Upper sidelobe suppression (dB)	≥16		

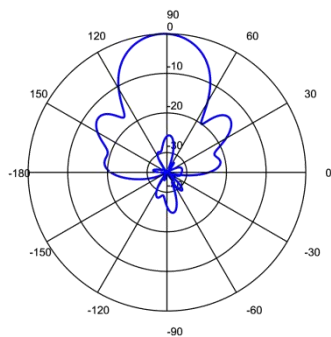
机械性能指标 Mechanical Properties

透镜尺寸Lens size (mm)	直径Φ=265
透镜净重Net weight of lens (kg)	0.35

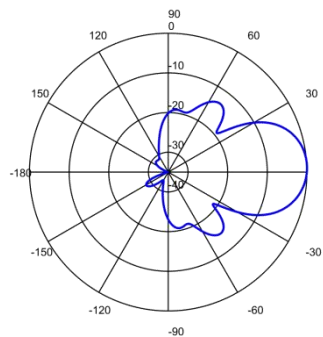
*采用盛路通信第三代龙伯透镜技术



方向图(1710-2690MHz)



水平面方向图
Horizontal pattern

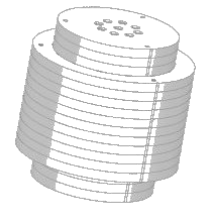


垂直面方向图
Vertical pattern

SL11012A

698-960MHz龙伯透镜 (球透镜)

698-960MHz Luneberg lens (sphere)



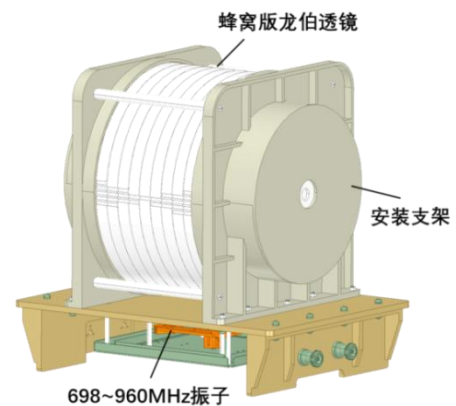
电性能指标 Electrical Properties

频率范围Frequency range (MHz)	698-803	885-960
极化方式Polarization (°)	支持水平极化、垂直极化、±45线极化辐射单元	
增益Gain (dBi)	≥11.0	≥12.5
水平面半功率波束宽度Horizontal half power beam width (°)	47±3	40±3
交叉极化比Cross polarization ratio (dB, 轴向)	≥16	
上旁瓣抑制Upper sidelobe suppression (dB)	≥16	
前后比Front to back ratio (dB)	≥20	≥25

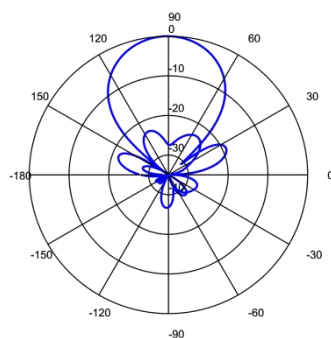
机械性能指标 Mechanical Properties

透镜尺寸Lens size (mm)	高度400, 直径Φ=400
透镜净重Net weight of lens (kg)	14.5

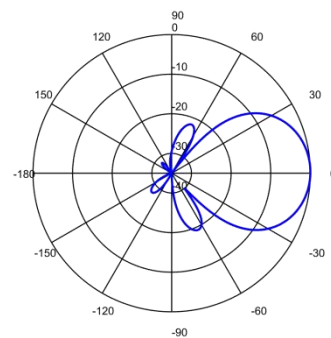
*采用盛路通信第二代龙伯透镜技术



方向图(698-960MHz)



水平面方向图
Horizontal pattern

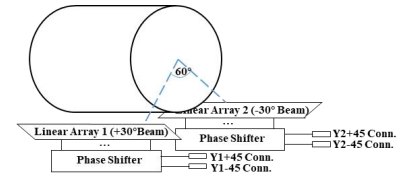


垂直面方向图
Vertical pattern

SL11011A

1710-2690MHz双波束($\pm 30^\circ$)四端口电调下倾透镜天线20dBi1710-2690MHz $\pm 30^\circ$ twin-beam 4-port lens antenna

20dBi, 0-10° electric downtilt



电性能指标 Electrical Properties

频率范围Frequency range (MHz)	1710~1880	1920~2170	2300~2690
极化方式Polarization(°)	± 45		
水平波束中心指向Horizontal beam center pointing (°)	$+30^\circ, -30^\circ$		
水平面半功率波束宽度Horizontal half power beam width (°)	34.5 \pm 1.5	29.5 \pm 1.5	24.0 \pm 2.0
增益Gain (dBi)	18.1 \pm 0.3	18.9 \pm 0.3	19.7 \pm 0.3
垂直面半功率波束宽度Vertical Half Power Beam Width (°)	10.2 \pm 0.8	8.8 \pm 0.8	7.0 \pm 0.5
交叉极化比Cross polarization ratio (dB)	$\pm 30^\circ: \geq 15$		
上旁瓣抑制Upper sidelobe suppression (dB)	≥ 15		
前后比Front to back ratio (dB)	≥ 25		
电下倾角调整范围Electric downtilt range (°)	0~10		
电下倾角精度Electric downtilt accuracy (°)	± 1		
垂直面机械调角范围Mechanical downtilt range of vertical plane (°)	0~20		
机械倾角精度Mechanical downtilt accuracy (°)	± 1		
电压驻波比VSWR	≤ 1.5		
波束间隔离度Beam to beam isolation (dB)	≥ 19		
极化隔离度Polarization isolation (dB)	≥ 25		
端口阻抗Impedance (Ω)	50		
防雷lightning protection	DC接地DC grounding		
平均功率容量Average power capacity (W)	150		

机械性能指标 Mechanical Properties

接头形式Connector type	4 \times 7/16 DIN型母头
天线尺寸Antenna size (mm)	高度1000mm, 直径 $\Phi=400$
包装尺寸Package size (mm)	1545 \times 455 \times 455
天线重量Antenna weight (kg)	28.8
安装架重量Weight of mounting frame (kg)	5.7
机械调整范围Mechanical adjustment range (°)	0~20
工作温度Working temperature (°)	-55~+75
承载风速Bearing wind speed (km/h)	200
迎风面积Windward area (m ²)	0.4
风载Wind load (N, @200km/h)	811
天线罩材料Wind borne radome material	玻璃钢FRP
抱杆直径Diameter of holding pole (mm)	$\Phi 50 \sim \Phi 115$

SL11011A

1710-2690MHz双波束($\pm 30^\circ$)四端口电调下倾透镜天线20dBi
 1710-2690MHz $\pm 30^\circ$ twin-beam 4-port lens antenna
 20dBi, 0-10° electric downtilt

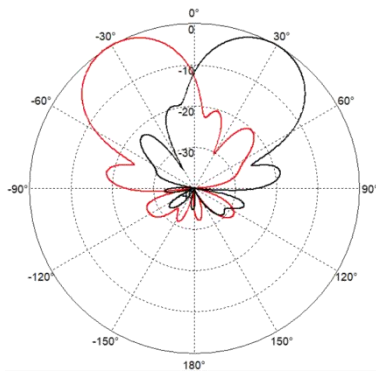


内置RET参数								
RET种类RET Category	内置可插拔							
RET 协议RET protocol	AISG2.0/3GPP							
输入电压Input voltage (V)	10-30 DC							
功耗Power waste (W)	<5w (工作) <1w (待机)							
校准时间Calibration time (s)	<40 (典型值)							
RET 接口RET interface	2 x 8 pin 接头(符合IEC 60130-9) 输入:阳头(Male)/输出:阴头(Female)							
AISG连接口AISG connector	1	2	3	4	5	6	7	8
	DC	n/c	RS-485B	n/c	RS-485A	DC	DC return	n/c
雷电保护Lightning Protection	3(10/350 μ s) 10(8/20 μ s)							

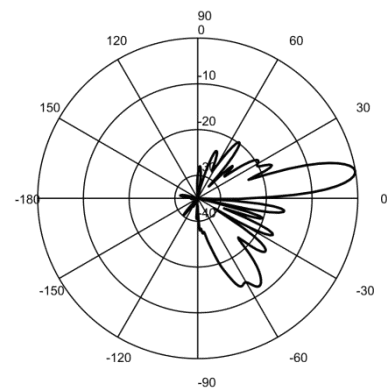
*采用盛路通信第二代龙伯透镜技术



方向图

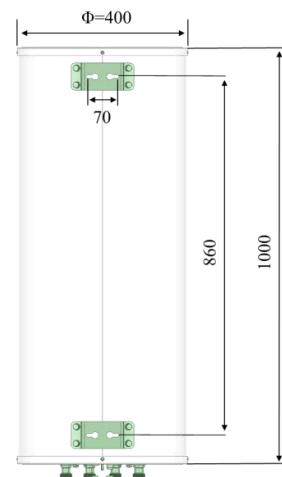
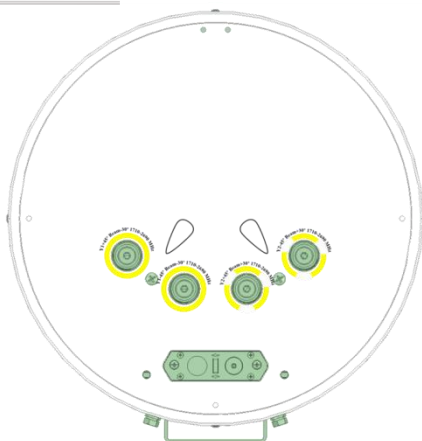


1710~2690MHz水平面方向图
Horizontal pattern



1710~2690MHz垂直面方向图
Vertical pattern

接头和阵列布局



SL11002E

1710-2170二波束15dBi/3300-3700三波束透镜天线18dBi

1710-2170MHz $\pm 33^\circ$ twin-beam 15dBi/3300-3700MHz

-33°, 0°, +33° triple-beam lens antenna 18dBi



电性能指标 Electrical Properties

频率范围Frequency range (MHz)	B1~B2: 1710-2170	P1~P3: 3300~3700
极化方式Polarization(°)	± 45	
水平波束中心指向Horizontal beam center pointing (°)	14.6 \pm 0.9	17.5 \pm 0.3
水平面半功率波束宽度Horizontal half power beam width (°)	31 \pm 3	18 \pm 1
增益Gain (dBi)	-33, +33	-33, 0, +33
垂直面半功率波束宽度Vertical Half Power Beam Width (°)	29 \pm 3	17 \pm 1
交叉极化比Cross polarization ratio(dB)	≥ 18	≥ 18
上旁瓣抑制Upper sidelobe suppression (dB)	≥ 15	≥ 11
前后比Front to back ratio (dB)	≥ 25	
垂直面机械调角范围Mechanical angle adjustment range of vertical plane (°)	0 ~ 20	
机械倾角精度Mechanical inclination accuracy (°)	± 1	
电压驻波比VSWR	≤ 1.5	
波束间隔离度Beam to beam isolation (dB)	≥ 19	
极化隔离度Polarization isolation (dB)	≥ 25	
端口阻抗Impedance (Ω)	50	
防雷lightning protection	DC接地DC grounding	
平均功率容量Average power capacity (W)	150	

机械性能指标 Mechanical Properties

接头形式Connector type	10 \times 7/16 DIN型母头
天线尺寸Antenna size (mm)	高度335mm, 直径 Φ =400
包装尺寸Package size (mm)	545 \times 455 \times 455
天线重量Antenna weight (kg)	8.8
安装架重量Weight of mounting frame (kg)	1.1
机械调整范围Mechanical adjustment range (°)	0 ~ 20
工作温度Working temperature (°)	-55 ~ +75
承载风速Bearing wind speed (km/h)	200
迎风面积Windward area (m ²)	0.15
风载Wind load (N, @200km/h)	316
天线罩材料Wind borne radome material	玻璃钢FRP
抱杆直径Diameter of holding pole (mm)	Φ 50 ~ Φ 115

*采用盛路通信第二代龙伯透镜技术

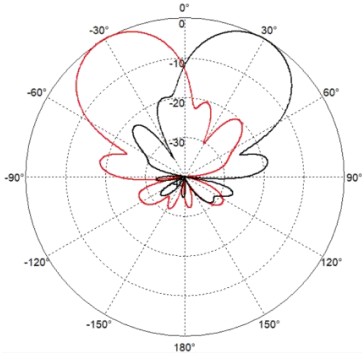
SL11002E

1710-2170二波束15dBi/3300-3700三波束透镜天线18dBi

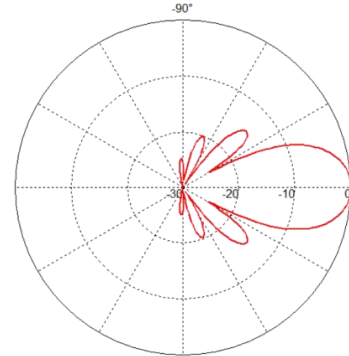
1710-2170MHz $\pm 33^\circ$ twin-beam 15dBi/3300-3700MHz -
 $33^\circ, 0^\circ, +33^\circ$ triple-beam lens antenna 18dBi



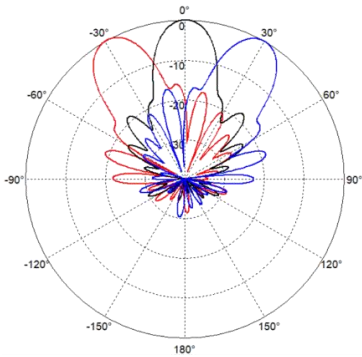
方向图



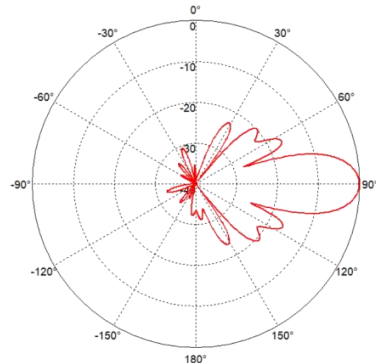
1710~2170MHz水平面方向图
Horizontal pattern



1710~2170MHz垂直面方向图
Vertical pattern

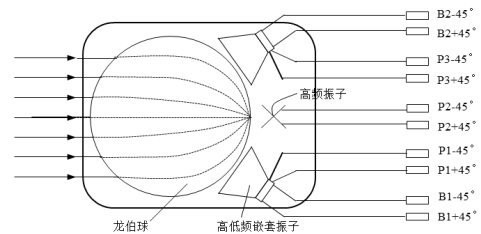
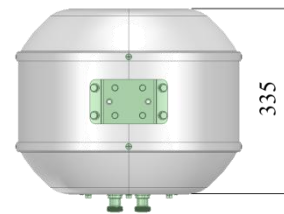
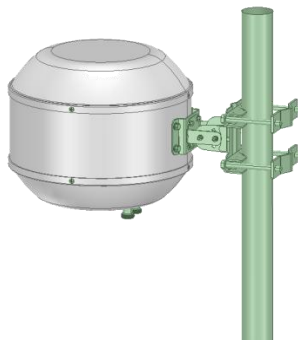
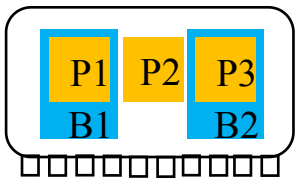
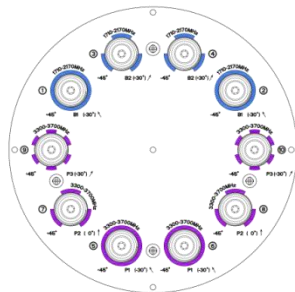


3300~3700MHz水平面方向图
Horizontal pattern



3300~3700MHz垂直面方向图
Vertical pattern

接头和阵列布局



SL11005E

高铁“2+2”1800/FA双频4口透镜天线(0~6°电调)

"2+2" 1800/FA dual-band 4-port lens antenna (0~6° electric downtilt)



电性能指标 Electrical Properties

频率范围Frequency range (MHz)	1710-1830	1885-1915	2010-2025
极化方式Polarization(°)	±45		
电下倾角调整范围Electric downtilt range (°)	0~6		
电下倾角精度Electric downtilt accuracy (°)	±1		
垂直面机械调角范围Mechanical downtilt range of vertical plane (°)	0~20		
机械倾角精度Mechanical downtilt accuracy (°)	±1		
增益Gain(dBi)	≥14.0	≥14.5	≥14.5
水平面半功率波束宽度Horizontal half power beam width (°)	≥30	≥28	≥28
垂直面半功率波束宽度Vertical Half Power Beam Width (°)	≥28	≥26	≥26
交叉极化比Cross polarization ratio (dB, 轴向)	≥13		
交叉极化比Cross polarization ratio (dB, 3dB范围)	≥10		
上旁瓣抑制Upper sidelobe suppression (dB)	≥13		
前后比Front to back ratio (dB)	≥23		
三阶互调Third-order intermodulation (dBm, @2x43dBm)	≤-107	/	/
电压驻波比VSWR	≤1.5		
隔离度Isolation (dB)	≥25		
端口阻抗Impedance (Ω)	50		
防雷lightning protection	DC接地DC grounding		
平均功率容量Average power capacity (W)	≥120	≥100	≥100

机械性能指标 Mechanical Properties

接头形式Connector type	4×7/16 DIN型母头		
天线尺寸Antenna size (mm)	高度720, 直径Φ=450		
包装尺寸Package size (mm)	1035×555×570		
天线净重Net weight of antenna (kg)	21.8		
安装架重量Weight of mounting frame (kg)	5.7		
机械调整范围Mechanical adjustment range (°)	0~20		
工作温度Working temperature (°)	-40~+70		
相对湿度Relative humidity (%)	8~98		
大气压强Atmospheric pressure (kPa)	70~106		
承载风速Bearing wind speed (km/h)	200		
迎风面积Windward area (m ²)	0.33		
风载Wind load (N, @200km/h)	722		
天线罩材料Wind borne radome material	玻璃钢FRP		
抱杆直径Diameter of holding pole (mm)	Φ50~Φ110		

SL11005E

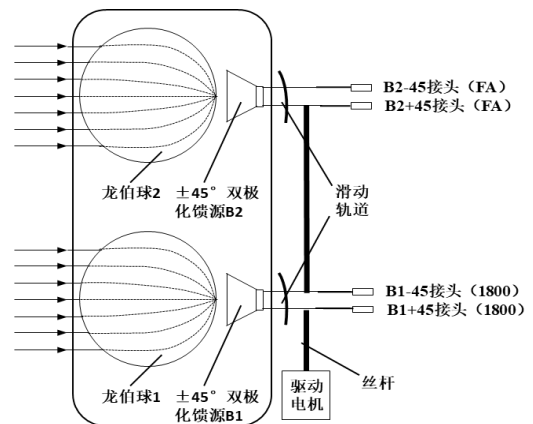
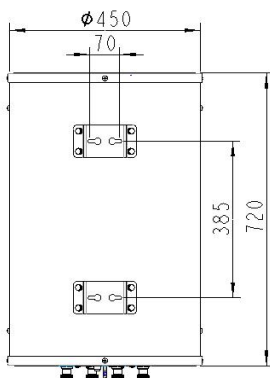
高铁 "2+2" 1800/FA双频4口透镜天线(0~6°电调)

"2+2" 1800/FA dual-band 4-port lens antenna (0~6° electric downtilt)

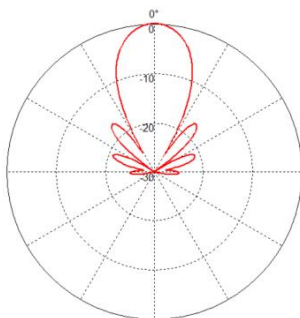


内置RET参数								
RET种类RET Category	内置可插拔							
RET 协议RET protocol	AISG2.0/3GPP							
输入电压Input voltage (V)	10-30 DC							
功耗Power waste (W)	<5w (工作) <1w (待机)							
校准时间Calibration time (s)	<40 (典型值)							
RET 接口RET interface	2 x 8 pin 接头(符合IEC 60130-9) 输入:阳头(Male)/输出:阴头(Female)							
AISG接口AISG connector	1	2	3	4	5	6	7	8
	DC	n/c	RS-485B	n/c	RS-485A	DC	DC return	n/c
雷电保护Lightning Protection	3(10/350μs) 10(8/20μs)							

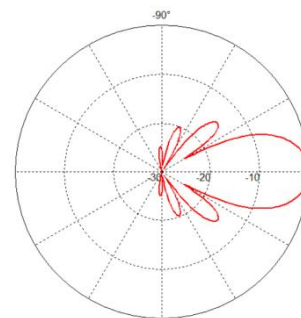
*采用盛路通信第二代龙伯透镜技术



方向图(1800+FA)



水平面方向图
Horizontal pattern



垂直面方向图
Vertical pattern

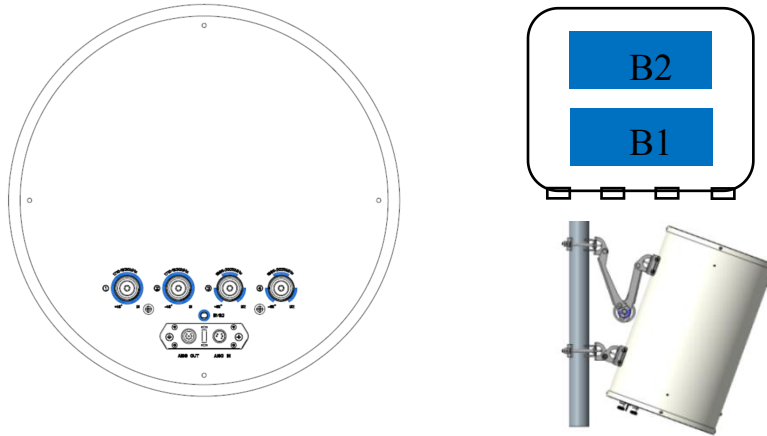
SL11005E

高铁“2+2”1800/FA双频4口透镜天线(0~6°电调)

"2+2" 1800/FA dual-band 4-port lens antenna (0~6° electric downtilt)



接头和阵列布局



附录 连接AISG线缆



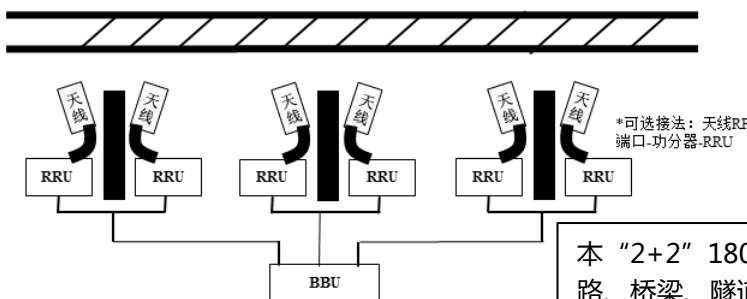
①取下天线上的AISG接头保护盖。



②天线上的AISG公头与AISG线缆母头对准并旋紧。

注：在级联时,先为每个天线接上AISG线缆,然后再用下级天线上的AISG线缆接到上级天线上的AISG母头(AISG In),如此连接多个天线。

使用说明



本“2+2”1800/FA双频电调透镜天线主要用于高速铁路、桥梁、隧道、高速公路等狭长、纵深环境,作为1800/FA板状天线的升级换代产品,可显著扩展无线覆盖,提升高速移动小区平滑切换体验。左图是其典型连接方式,基站-铁轨垂直间距、基站-基站间距、天线挂高建议值分别为60~180m,400~1200m,25~45m。

SL11005B

高铁“2+2+4”1800/FA/D三频8口透镜天线(0~6°电调)
 "2+2+4" 1800/FA/D triple-band 8-port lens antenna
 (0~6° electric downtilt)



电性能指标 Electrical Properties

频率范围Frequency range (MHz)	1710-1830	1885-1915	2010-2025	2515-2675
极化方式Polarization(°)	±45			
电下倾角调整范围Electric downtilt range (°)	0~6			
电下倾角精度Electric downtilt accuracy (°)	±1			
垂直面机械调角范围Mechanical downtilt range of vertical plane (°)	0~20			
机械倾角精度Mechanical downtilt accuracy (°)	±1			
增益Gain(dBi)	≥13.5	≥14	≥14	≥15.5
水平面半功率波束宽度Horizontal half power beam width (°)	≥30	≥28	≥28	≥23
垂直面半功率波束宽度Vertical Half Power Beam Width (°)	≥28	≥26	≥26	≥20
交叉极化比Cross polarization ratio (dB, 轴向)	≥13			
交叉极化比Cross polarization ratio (dB, 3dB范围)	≥10			
上旁瓣抑制Upper sidelobe suppression (dB)	≥13			
前后比Front to back ratio (dB)	≥23			
三阶互调Third-order intermodulation (dBm, @2x43dBm)	≤-107	/	/	/
电压驻波比VSWR	≤1.5			
隔离度Isolation (dB)	≥25			
端口阻抗Impedance (Ω)	50			
防雷lightning protection	DC接地DC grounding			
平均功率容量Average power capacity (W)	≥120	≥100	≥100	≥200

机械性能指标 Mechanical Properties

接头形式Connector type	8×7/16 DIN型母头
天线尺寸Antenna size (mm)	高度720, 直径Φ=450
包装尺寸Package size (mm)	1035×555×570
天线净重Net weight of antenna (kg)	22.6
安装架重量Weight of mounting frame (kg)	5.7
机械调整范围Mechanical adjustment range (°)	0~20
工作温度Working temperature (°)	-40~+70
相对湿度Relative humidity (%)	8~98
大气压强Atmospheric pressure (kPa)	70~106
承载风速Bearing wind speed (km/h)	200
迎风面积Windward area (m ²)	0.33
风载Wind load (N, @200km/h)	722
天线罩材料Wind borne radome material	玻璃钢FRP
抱杆直径Diameter of holding pole (mm)	Φ50~Φ110

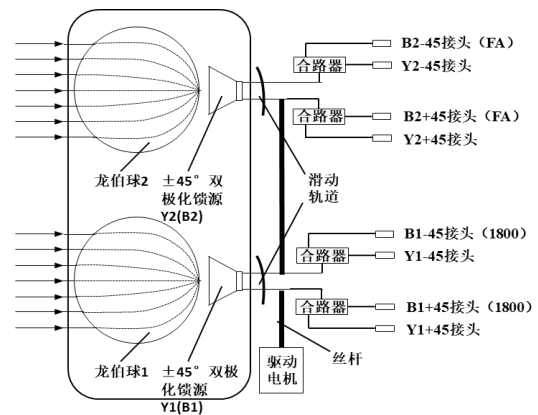
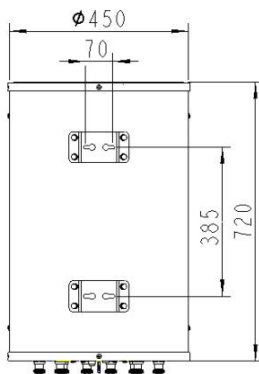
SL11005B

高铁 "2+2+4" 1800/FA/D三频8口透镜天线(0~6°电调)
 "2+2+4" 1800/FA/D triple-band 8-port lens antenna
 (0~6 ° electric downtilt)

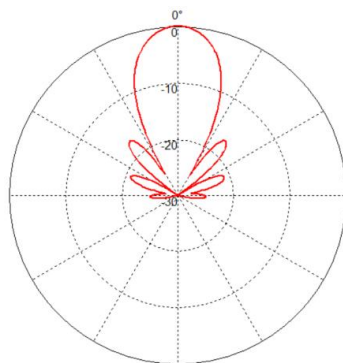


内置RET参数								
RET种类RET Category	内置可插拔							
RET 协议RET protocol	AISG2.0/3GPP							
输入电压Input voltage (V)	10-30 DC							
功耗Power waste (W)	<5w (工作) <1w (待机)							
校准时间Calibration time (s)	<40 (典型值)							
RET 接口RET interface	2 x 8 pin 接头(符合IEC 60130-9) 输入:阳头(Male)/输出:阴头(Female)							
AISG连接口AISG connector	1	2	3	4	5	6	7	8
	DC	n/c	RS-485B	n/c	RS-485A	DC	DC return	n/c
雷电保护Lightning Protection	3(10/350μs) 10(8/20μs)							

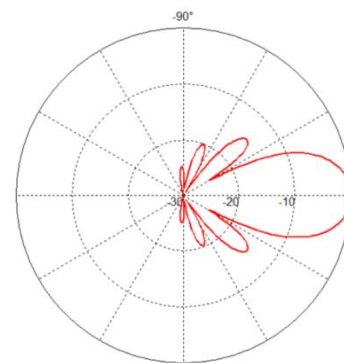
*采用盛路通信第二代龙伯透镜技术



方向图(1800+F/A+D)



水平面方向图
Horizontal pattern



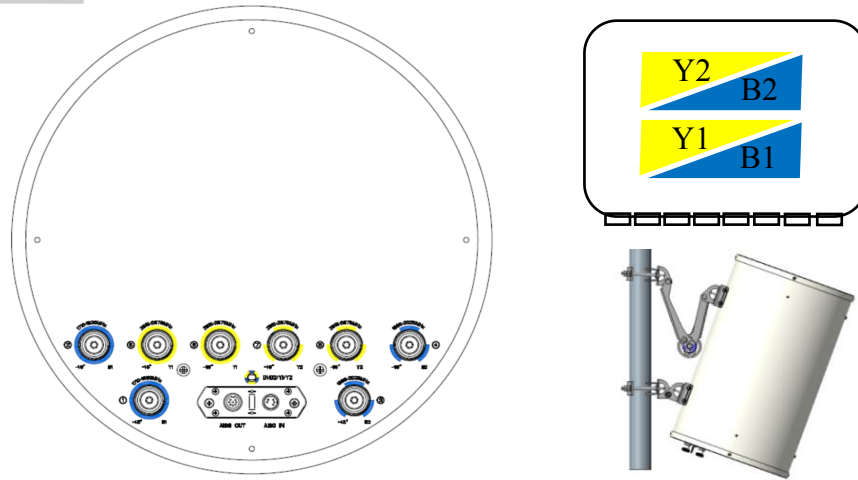
垂直面方向图
Vertical pattern

SL11005B

高铁“2+2+4”1800/FA/D三频8口透镜天线(0~6°电调)
High-speed railway “2+2+4” 1800/FA/D triple-band
8-port lens antenna (0~6 ° electric downtilt)



接头和阵列布局



附录 连接AISG线缆



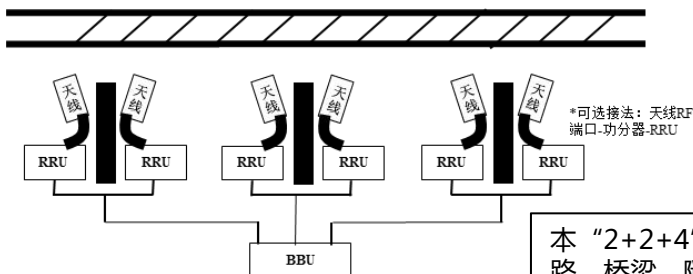
①取下天线上的AISG接头保护盖。



②天线上的AISG公头与AISG线缆母头对准并旋紧。

注：在级联时,先为每个天线接上AISG线缆,然后再用下级天线上的AISG线缆接到上级天线上的AISG母头(AISG In),如此连接多个天线。

使用说明



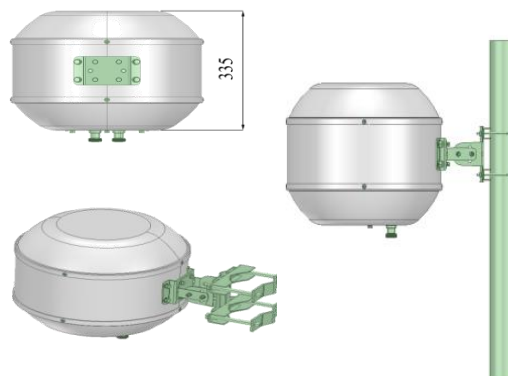
本“2+2+4”1800/FA/D三频电调透镜天线主要用于高速铁路、桥梁、隧道、高速公路等狭长、纵深环境,作为1800/FA/D板状天线的升级换代产品,可显著扩展无线覆盖,提升高速移动小区平滑切换体验。左图是其典型连接方式,基站-铁轨垂直间距、基站-基站间距、天线挂高建议值分别为60~180m, 400~1200m, 25~45m。

电性能指标 Electrical Properties

频率范围Frequency range (MHz)	B1~B2: 1710-2170	P1~P3: 3300~3700
极化方式Polarization(°)	±45	
水平波束中心指向Horizontal beam center pointing (°)	-33, +33	-33, 0, +33
水平面半功率波束宽度Horizontal half power beam width (°)	31±3	18±1
增益Gain (dBi)	14.6±0.9	17.5±0.3
垂直面半功率波束宽度Vertical Half Power Beam Width (°)	29±3	17±1
交叉极化比Cross polarization ratio(dB)	≥18	≥18
上旁瓣抑制Upper sidelobe suppression (dB)	≥15	≥11
前后比Front to back ratio (dB)	≥25	
电压驻波比VSWR	≤1.5	
波束间隔离度Beam to beam isolation (dB)	≥19	
极化隔离度Polarization isolation (dB)	≥25	
端口阻抗Impedance (Ω)	50	
防雷lightning protection	DC接地DC grounding	
平均功率容量Average power capacity (W)	150	

机械性能指标 Mechanical Properties

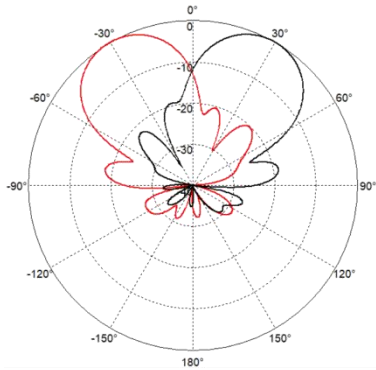
天线尺寸Antenna size (mm)	高度335mm，直径Φ=400
天线重量Antenna weight (kg)	9.1



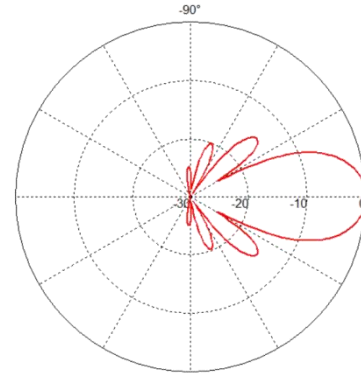
*采用盛路通信第一代龙伯透镜技术



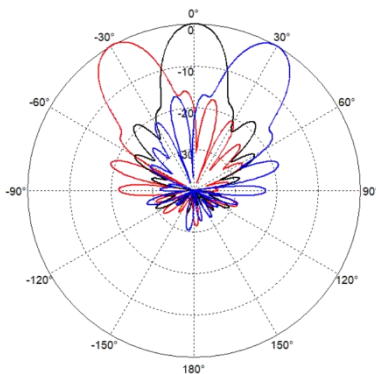
方向图



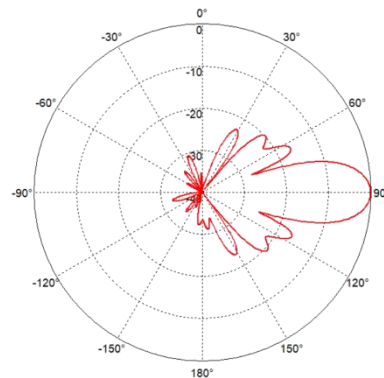
1710~2170MHz水平面方向图
Horizontal pattern



1710~2170MHz垂直面方向图
Vertical pattern

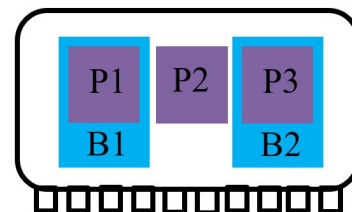
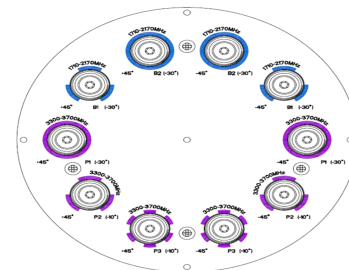
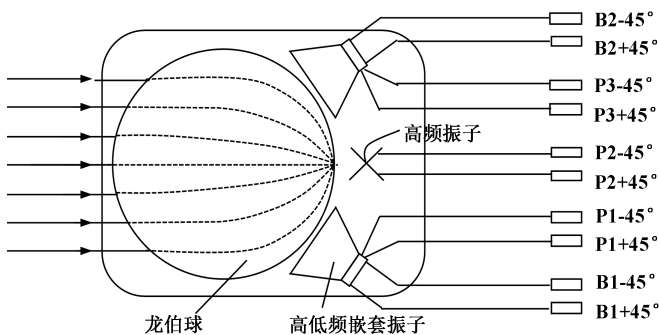


3300~3700MHz水平面方向图
Horizontal pattern



3300~3700MHz垂直面方向图
Vertical pattern

接头和阵列布局



电性能指标 Electrical Properties

频率范围Frequency range (MHz)	1710-1830	1885-1915	2010-2025	2515-2675
极化方式Polarization(°)	±45			
电下倾角调整范围Electric downtilt range(°)	0~6			
电下倾角精度Electric downtilt accuracy (°)	±1			
增益Gain(dBi)	≥13.5	≥14	≥14	≥15.5
水平面半功率波束宽度Horizontal half power beam width (°)	≥30	≥28	≥28	≥23
垂直面半功率波束宽度Vertical Half Power Beam Width (°)	≥28	≥26	≥26	≥20
交叉极化比Cross polarization ratio (dB, 轴向)	≥13			
交叉极化比Cross polarization ratio (dB, 3dB范围)	≥10			
上旁瓣抑制Upper sidelobe suppression (dB)	≥13			
前后比Front to back ratio (dB)	≥23			
三阶互调Third-order intermodulation (dBm, @2x43dBm)	≤-107	/	/	/
电压驻波比VSWR	≤1.5			
隔离度Isolation (dB)	≥25			
端口阻抗Impedance (Ω)	50			
防雷lightning protection	DC接地DC grounding			
平均功率容量Average power capacity (W)	≥120	≥100	≥100	≥150

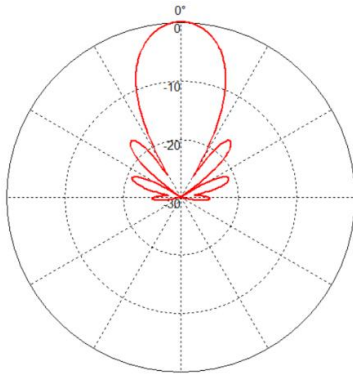
机械性能指标 Mechanical Properties

天线尺寸Antenna size (mm)	高度720, 直径Φ=450
天线重量Antenna weight (kg)	21

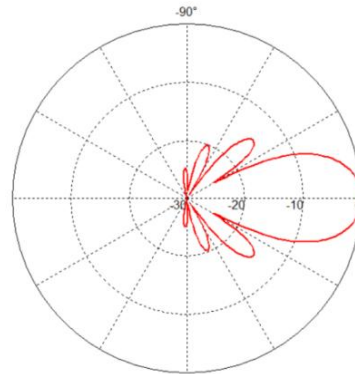
*采用盛路通信第一代龙伯透镜技术



方向图(1800+F/A+D)

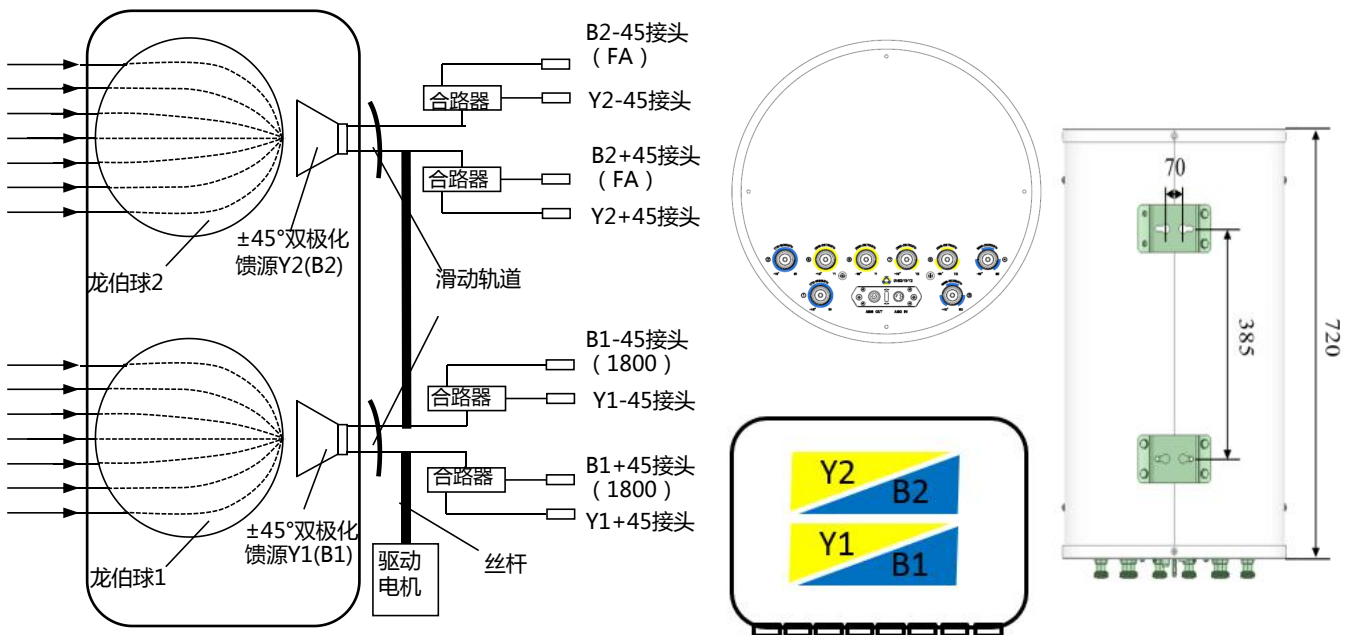


水平面方向图
Horizontal pattern



垂直面方向图
Vertical pattern

接头和阵列布局



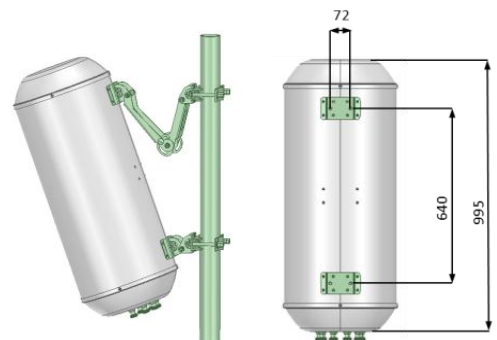
电性能指标 Electrical Properties

频率范围Frequency range (MHz)	1710-1830	1885-1915	2010-2025	2515-2675
极化方式Polarization(°)	±45			
增益Gain(dBi)	≥14	≥14	≥14	≥15.5
水平面半功率波束宽度Horizontal half power beam width (°)	≥30	≥28	≥28	≥23
垂直面半功率波束宽度Vertical Half Power Beam Width (°)	≥28	≥26	≥26	≥20
交叉极化比Cross polarization ratio (dB, 轴向)	≥18			
上旁瓣抑制Upper sidelobe suppression (dB)	≥13			
前后比Front to back ratio (dB)	≥25			
三阶互调Third-order intermodulation (dBm, @2x43dBm)	≤-107	/	/	/
电压驻波比VSWR	≤1.5			
隔离度Isolation (dB)	≥25			
端口阻抗Impedance (Ω)	50			
防雷lightning protection	DC接地DC grounding			
平均功率容量Average power capacity (W)	≥120	≥100	≥100	≥200

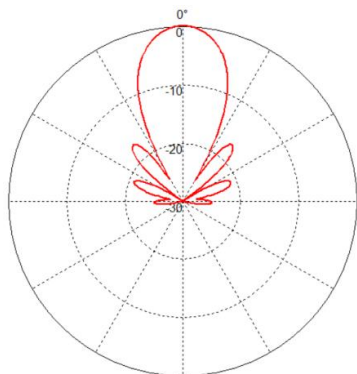
机械性能指标 Mechanical Properties

天线尺寸Antenna size (mm)	高度995, 直径Φ=400
天线重量Antenna weight (kg)	26

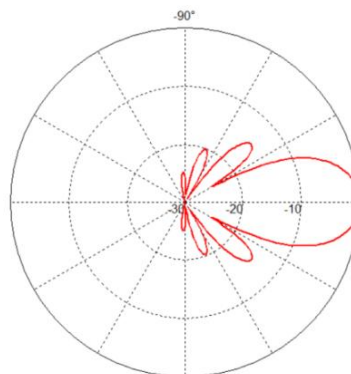
*采用盛路通信第一代龙伯透镜技术



方向图(1800+F/A+D)

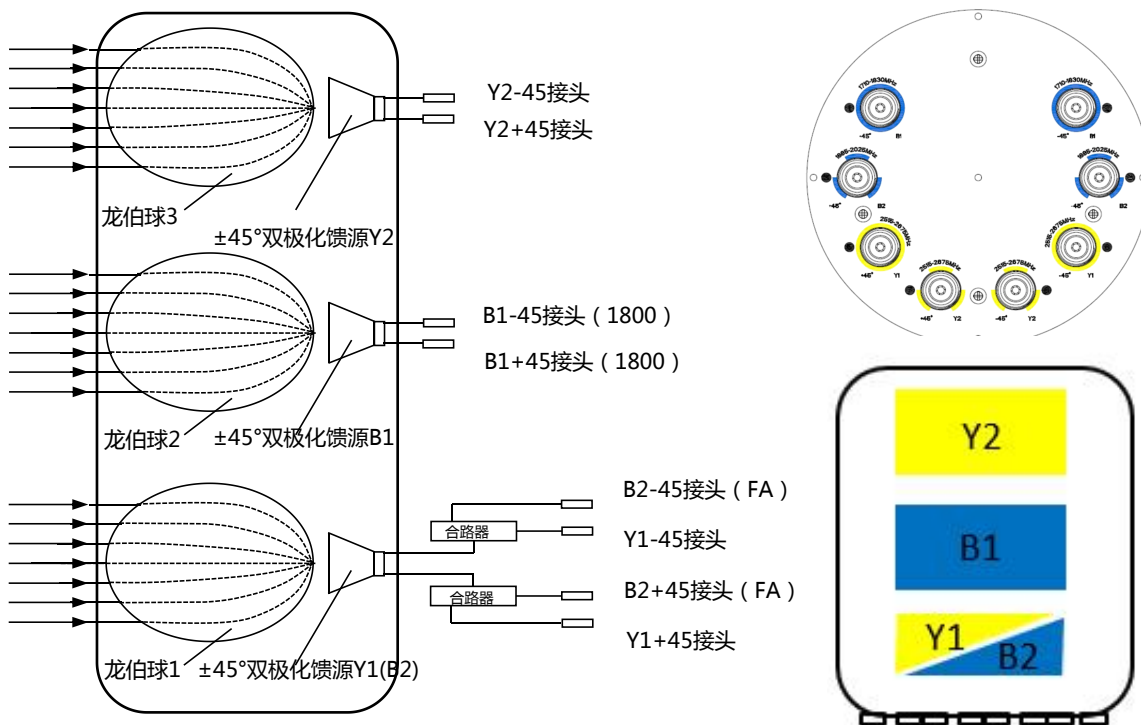


水平面方向图
Horizontal pattern



垂直面方向图
Vertical pattern

接头和阵列布局



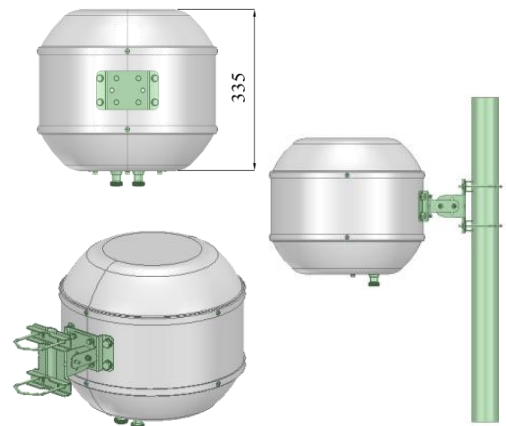
电性能指标 Electrical Properties

频率范围Frequency range (MHz)	1710-1850	1885-1915	2010-2025	2515-2690
极化方式Polarization(°)	±45			
增益Gain(dBi)	≥14.2	≥14.6	≥15.0	≥16.5
水平面半功率波束宽度Horizontal half power beam width (°)	≥31	≥29	≥27	≥24
垂直面半功率波束宽度Vertical Half Power Beam Width (°)	≥30	≥28	≥25	≥21
交叉极化比Cross polarization ratio (dB, 轴向)	≥18			
上旁瓣抑制Upper sidelobe suppression (dB)	≥13			
前后比Front to back ratio (dB)	≥25			
三阶互调Third-order intermodulation (dBm, @2x43dBm)	≤-110	/	/	/
电压驻波比VSWR	≤1.5			
隔离度Isolation (dB)	≥25			
端口阻抗Impedance (Ω)	50			
防雷lightning protection	DC接地DC grounding			
平均功率容量Average power capacity (W)	250			

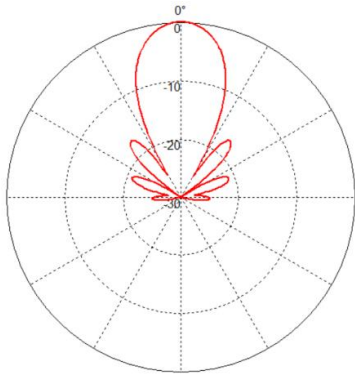
机械性能指标 Mechanical Properties

天线尺寸Antenna size (mm)	高度335mm, 直径Φ=400
天线重量Antenna weight (kg)	8.8

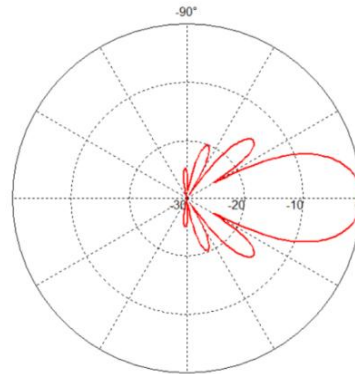
*采用盛路通信第一代龙伯透镜技术



方向图(1800+F/A+D)

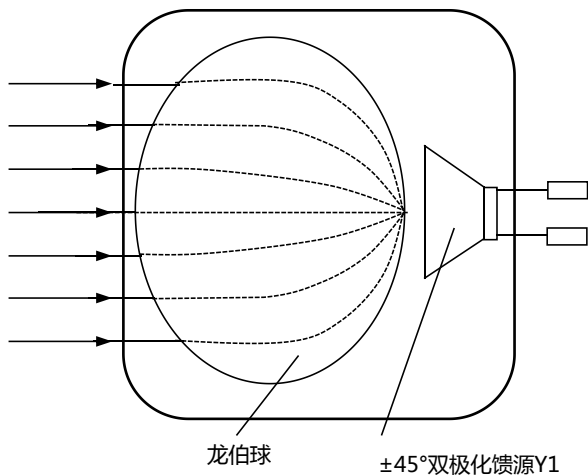


水平面方向图
Horizontal pattern



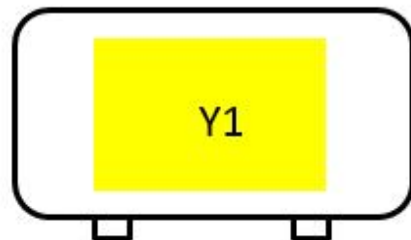
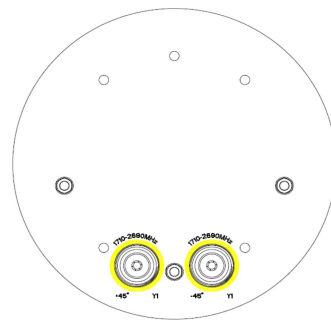
垂直面方向图
Vertical pattern

接头和阵列布局



Y1-45接头

Y1+45接头



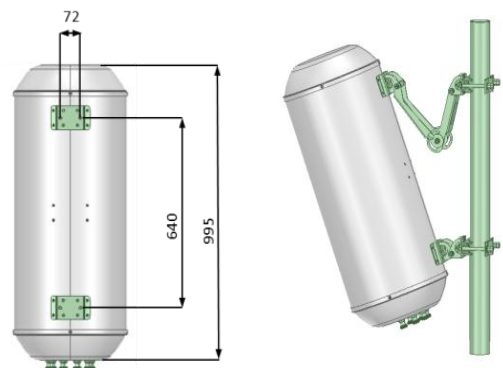
电性能指标 Electrical Properties

频率范围Frequency range (MHz)	1710-1850	1885-1915	2010-2025	2515-2690
极化方式Polarization(°)	±45			
增益Gain(dBi)	≥14.1	≥14.5	≥14.8	≥16.5
水平面半功率波束宽度Horizontal half power beam width (°)	≥31	≥29	≥28	≥24
垂直面半功率波束宽度Vertical Half Power Beam Width (°)	≥30	≥28	≥24	≥21
交叉极化比Cross polarization ratio (dB, 轴向)	≥18			
上旁瓣抑制Upper sidelobe suppression (dB)	≥13			
前后比Front to back ratio (dB)	≥25			
三阶互调Third-order intermodulation (dBm, @2x43dBm)	≤-110	/	/	/
电压驻波比VSWR	≤1.5			
隔离度Isolation (dB)	≥25			
端口阻抗Impedance (Ω)	50			
防雷lightning protection	DC接地DC grounding			
平均功率容量Average power capacity (W)	250			

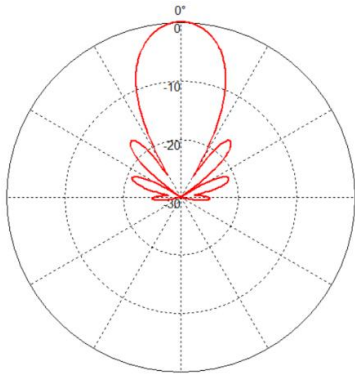
机械性能指标 Mechanical Properties

天线尺寸Antenna size (mm)	高度995, 直径Φ=400
天线重量Antenna weight (kg)	25.5

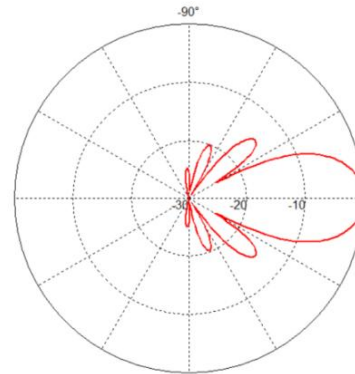
*采用盛路通信第一代龙伯透镜技术



方向图(1800+F/A+D)

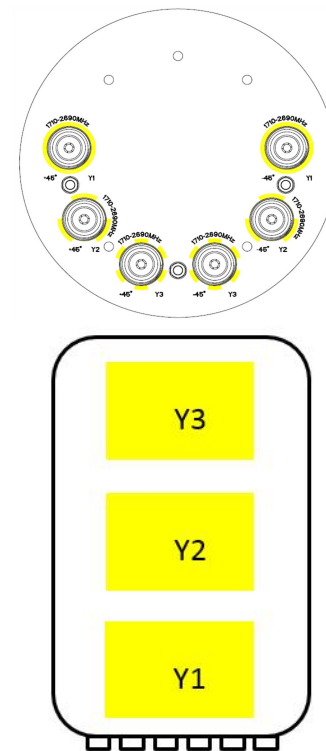
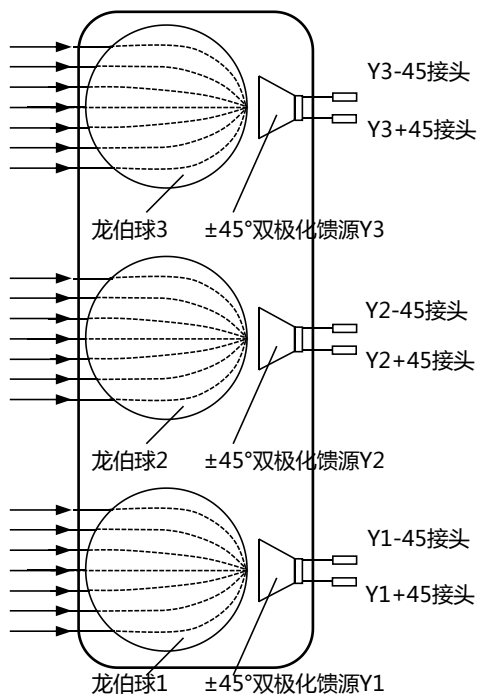


水平面方向图
Horizontal pattern



垂直面方向图
Vertical pattern

接头和阵列布局



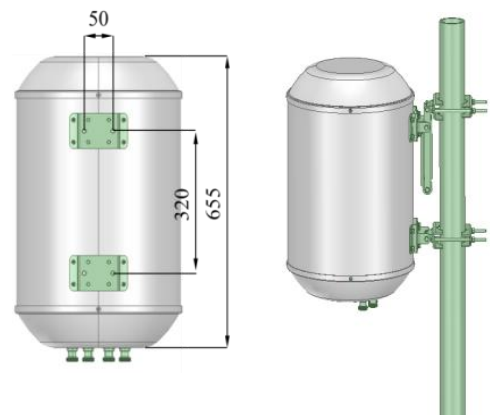
电性能指标 Electrical Properties

频率范围Frequency range (MHz)	1710-1850	1885-1915	2010-2025	2515-2690
极化方式Polarization(°)	±45			
增益Gain(dBi)	≥14.1	≥14.5	≥14.8	≥16.5
水平面半功率波束宽度Horizontal half power beam width (°)	≥31	≥29	≥28	≥24
垂直面半功率波束宽度Vertical Half Power Beam Width (°)	≥30	≥28	≥24	≥21
交叉极化比Cross polarization ratio (dB, 轴向)	≥18			
上旁瓣抑制Upper sidelobe suppression (dB)	≥13			
前后比Front to back ratio (dB)	≥25			
三阶互调Third-order intermodulation (dBm, @2x43dBm)	≤-110	/	/	/
电压驻波比VSWR	≤1.5			
隔离度Isolation (dB)	≥25			
端口阻抗Impedance (Ω)	50			
防雷lightning protection	DC接地DC grounding			
平均功率容量Average power capacity (W)	250			

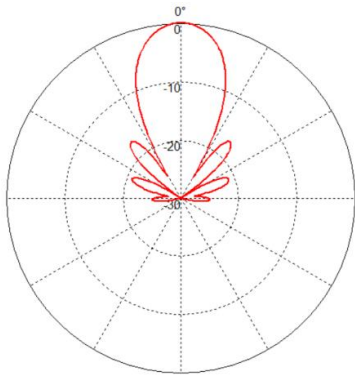
机械性能指标 Mechanical Properties

天线尺寸Antenna size (mm)	高度655, 直径Φ=400
天线重量Antenna weight (kg)	18.7

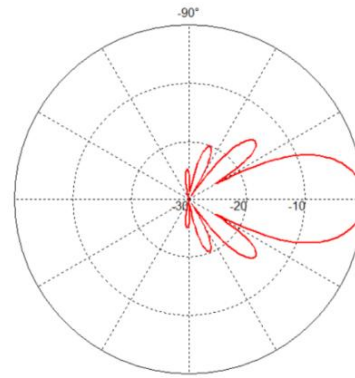
*采用盛路通信第一代龙伯透镜技术



方向图(1800+F/A+D)

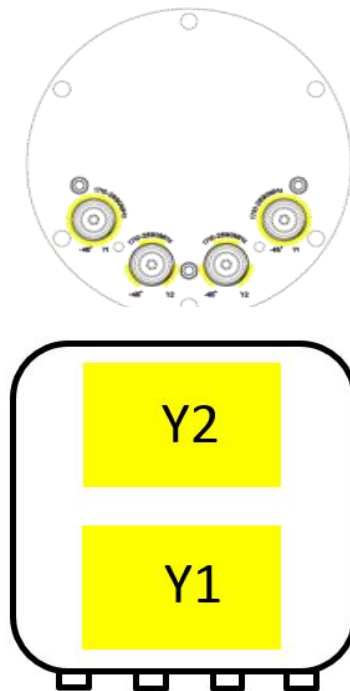
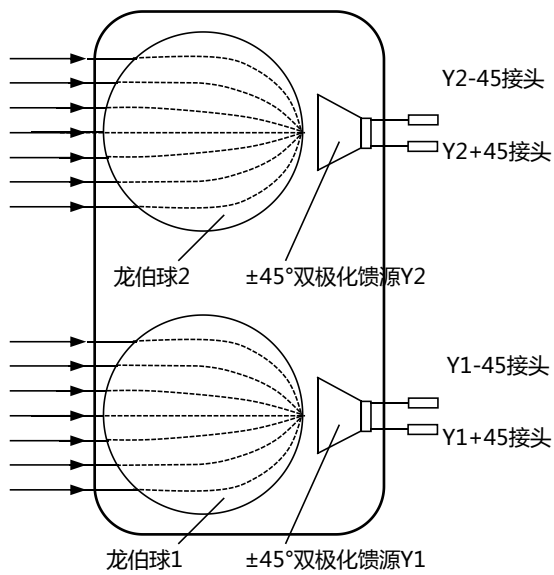


水平面方向图
Horizontal pattern



垂直面方向图
Vertical pattern

接头和阵列布局



帮助客户成功 成就无限沟通

Developing with our customers Connecting the world the wireless way



股票代码：002446