



Product Specifications

SL-2L6M-4P609016-8P1727D17-4P172717-E12-V01

2*698-960/6*1710-2690 MHz

65/65/33/33/33/33/65/65deg 16/16/17/17/17/17/17/17dBi XXXXXXXXpol 16-port antenna

Integrated and replaceable RCU, each band individually adjustable

16*4.3-10(F) connectors @bottom

Antenna Specifications

		Electrical Properties			
Frequency Range(MHz)		R1,R2:698-960			
		698-803	803-820	820-880	880-960
Gain (dBi)	at middle tilt	13.6	14.0	14.2	14.8
	over all tilt	13.4±0.7	13.8±0.5	14.0±0.6	14.6±0.5
Polarization		+45°/-45°			
Horizontal -3dB Beamwidth(°)		68±5	66±4	64±4	61±4
Vertical -3dB Beamwidth(°)		14.8±1.2	13.7±0.9	12.2±0.9	11.7±0.8
Electrical Downtilt(°)		2-12, continuously adjustable			
First Upper Side Lobe Suppression (Typ.)(dB)		≥15.0	≥15.0	≥15.0	≥15.0
Cross Polar Ratio (0°)(dB)		≥17.0	≥17.0	≥17.0	≥16.0
Cross Polar Ratio (±60°)(dB)		≥8.0	≥7.0	≥7.0	≥6.0
Front to Back Ratio, ±30°(dB)		≥22.0	≥22.0	≥22.0	≥22.0
VSWR		<1.5			
Cross-polar Isolation (dB)		≥25			
Inter-band Isolation (dB)		≥25			
PIM3 (2×43 dBm carrier)(dBc)		≤-153			
Impedance(Ω)		50			
Grounding		DC Ground			
Max. Average Input Power per Port(W)		250 (at 50°C ambient temperature)			

Electrical Properties



Product Specifications

Frequency Range(MHz)		Y2,Y3,Y4,Y5: 1695-2690			
		1695-1920	1920-2170	2300-2490	2490-2690
Gain (dBi)	at middle tilt	16	16.3	16.6	16.5
	over all tilt	15.8±0.5	16.1±0.5	16.4±0.5	16.3±0.5
Polarization		+45°/-45°			
Horizontal -3dB Beamwidth(°)		34.0±3.0	31.0±2.0	29.0±2.0	26.0±2.0
Vertical -3dB Beamwidth(°)		12.2±0.9	11.8±0.7	10.6±0.7	10.3±0.6
Electrical Downtilt(°)		2-12, continuously adjustable			
First Upper Side Lobe Suppression (Typ.)(dB)		≥15.0	≥15.0	≥15.0	≥15.0
Cross Polar Ratio (0°)(dB)		≥17.0	≥17.0	≥17.0	≥16.0
Beam Center Direction-Horizontal(°)		±30.0	±28.0	±26.0	±24.0
Horizontal Side Lobe Suppression (Typ.)(dB)		≥15.0	≥15.0	≥15.0	≥15.0
Front to Back Ratio, ±30°(dB)		≥25.0	≥25.0	≥25.0	≥27.0
VSWR		<1.5			
Port to Port Isolation (dB)		≥26			
Beam to Beam Isolation (dB)		≥16			
PIM3 (2×43 dBm carrier)(dBc)		≤-153			
Impedance(Ω)		50			
Grounding		DC Ground			
Max. Average Input Power per Port(W)		250 (at 50°C ambient temperature)			

Electrical Properties

Frequency Range(MHz)		Y1,Y6: 1695-2690			
		1695-1920	1920-2170	2300-2490	2490-2690
Gain (dBi)	at middle tilt	16.3	16.7	17.0	16.9
	over all tilt	16.1±0.5	16.5±0.5	16.8±0.5	16.7±0.5
Polarization		+45°/-45°			
Horizontal -3dB Beamwidth(°)		65.0±3.0	63.0±2.0	61.0±2.0	59.0±2.0
Vertical -3dB Beamwidth(°)		11.5±0.9	10.4±0.7	9.7±0.7	8.3±0.6
Electrical Downtilt(°)		2-12, continuously adjustable			
First Upper Side Lobe Suppression (Typ.)(dB)		≥15.0	≥15.0	≥15.0	≥15.0
Cross Polar Ratio (0°)(dB)		≥17.0	≥17.0	≥17.0	≥16.0



Product Specifications

Cross Polar Ratio ($\pm 60^\circ$)(dB)	≥ 8.0	≥ 7.0	≥ 6.0	≥ 6.0
Front to Back Ratio, $\pm 30^\circ$ (dB)	≥ 25.0	≥ 25.0	≥ 25.0	≥ 25.0
VSWR	<1.5			
Cross-polar Isolation (dB)	≥ 25			
Inter-band Isolation (dB)	≥ 25			
PIM3 (2×43 dBm carrier)(dBc)	≤ -153			
Impedance(Ω)	50			
Grounding	DC Ground			
Max. Average Input Power per Port(W)	250 (at 50°C ambient temperature)			

Values based on NGMN-N-P-BASTA V11.1

A member of



Certifications



Mechanical Properties

Radome Material	Fiberglass
Radome Colour	Light Grey
Connector Type	4.3-10(F)×16
Antenna Dimension (H×W×D)(mm)	1600×499×205
Packing Size (H×W×D)(mm)	1900×535×230
Antenna Net Weight(kg)	32
Installation Kit Weight(kg)	5.6(2 units)
Shipping Weight(kg)	43
Mechanical Downtilt($^\circ$)	0-15
Mast Diameter Supported(mm)	50-114
Pole Length(mm)	>2000
Operating Temperature($^\circ$ C)	-55-+60



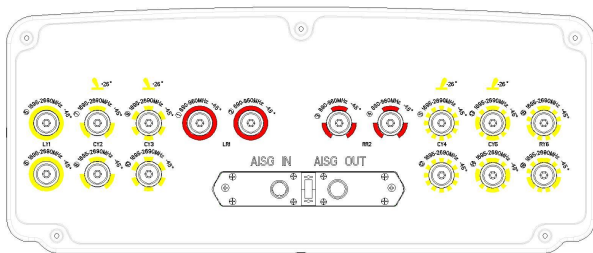
Product Specifications

Wind Load (at 150 km/h)	1126/463/1239 N (Frontal/Lateral/Rear side)
Maximum Wind Speed (km/h)	200

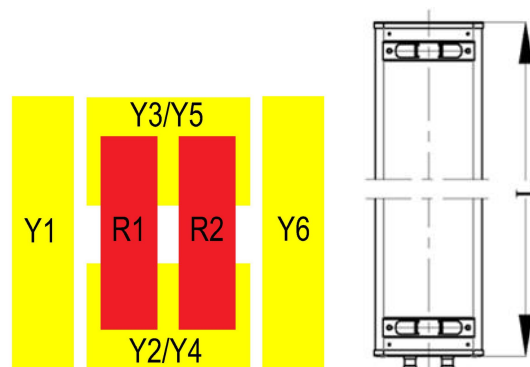
RET Properties

Power Supply	10-30V dc
Power Consumption	≤2W (Idle), ≤10W (in Motion)
Hardware Interface	RS 485A/B(pin5, pin3); power supply(pin1, pin6); DC return(pin 7); according to AISG 2.0/3GPP
Logical Interface	HEX Coded Commands Based on HDLC Protocol
Protocol Supported	AISG 2.0/3GPP
Adjustment Time (Full Range)	<90s(typical, depending on model)
Adjustment Cycles	>20000
Torque Max.	≥160 mN.m
Lightning Protection Rate	IEC 61000-4-5 Current Pulse Profile, 8/20 μs Min. @8kA±5 Repetitions
Connectors	2 Circle Connector According to IEC 60130-9 and AISG. Daisy Chain In: Male, Daisy Chain Out: Female

Antenna Ports



Array Layout

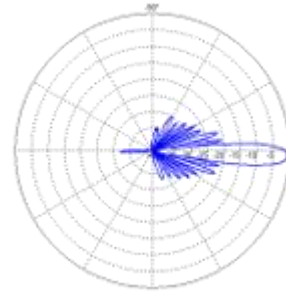
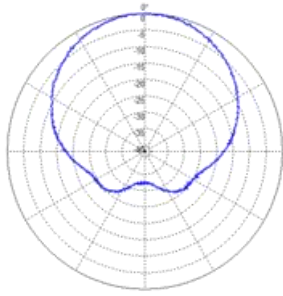


Reference Radiation Patterns

698-960/1695-2690MHz (65deg)

Horizontal Pattern

Vertical Pattern



1695-2690MHz (twin-beam 35deg)

Horizontal Pattern

Vertical Pattern

